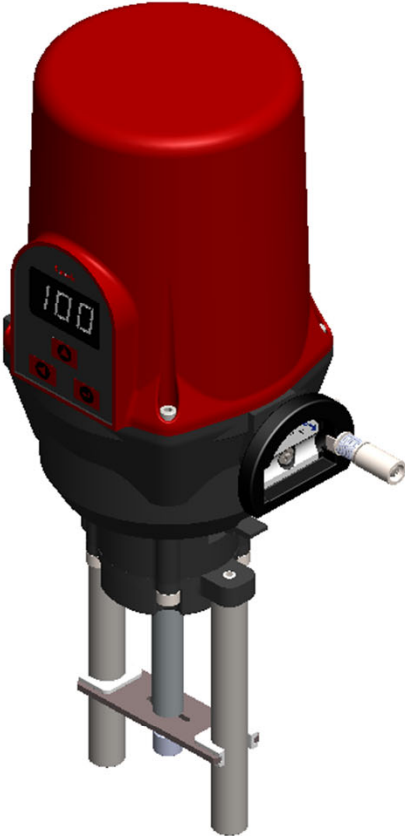


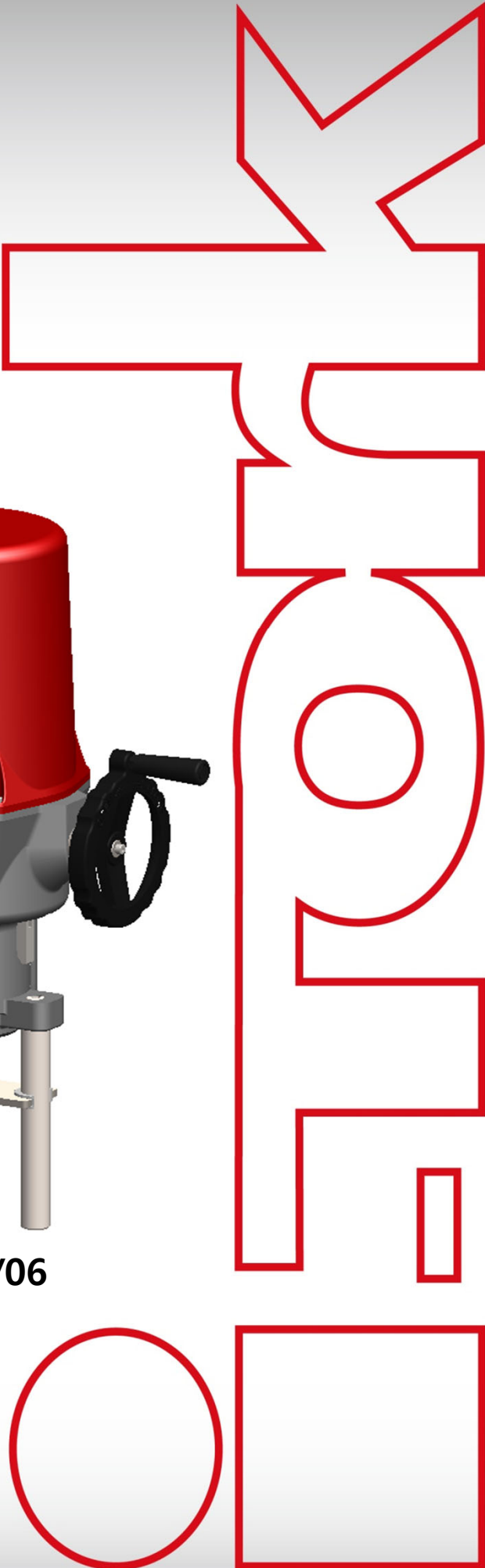
Electric Linear Actuator ITL Series



ITL01/02



ITL04/06

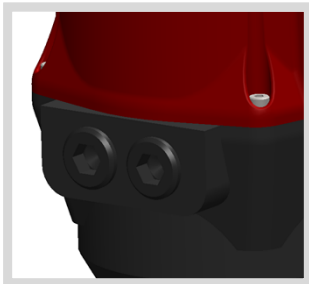


ITL ELECTRIC LINEAR ACTUATOR

ITL series linear actuator has been developed for a wide range of linear applications and to service reliable performance, long trouble free operation, more flexibility and maximized ability to integrate fully into sophisticated control system as our well-known Linear actuator the 'IQL' series. Also applied "100% duty cycle motor" and very compact but powerful & highly durable mechanical design.

Housing

Hard anodized aluminum alloy with external powder coating against corrosive industrial environment

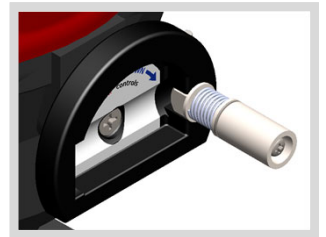


Cable entries

- Standard 2-PF 1/2
(Optional Tap is available)
Refer to technical data

Digital display controller (Option)

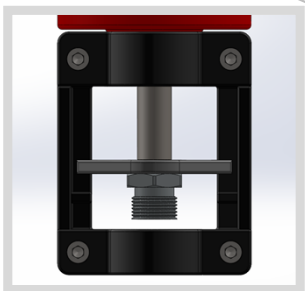
Electric positioning indicator & Digital display controller with push button type for easy operation



Handwheel

Compact and storable folding knob
(for ITL01/02 only)

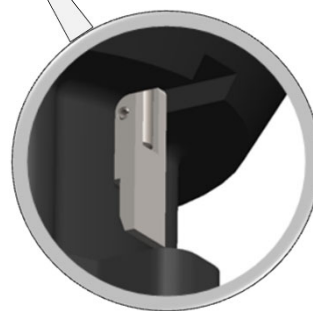
Pillar



Linkage

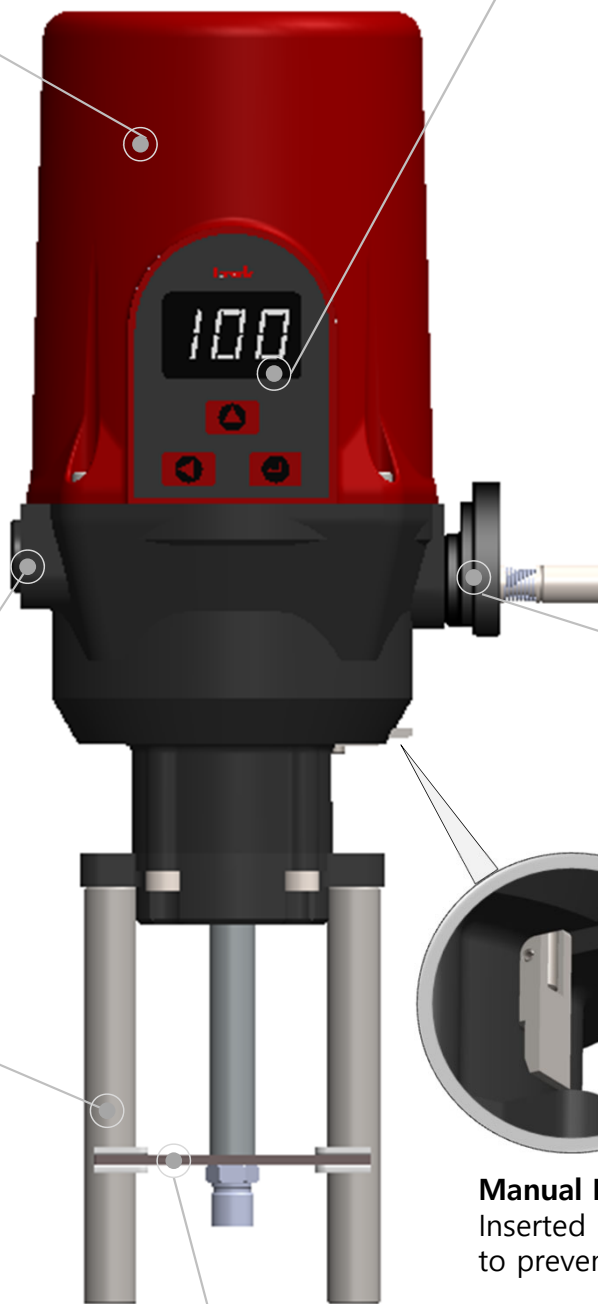
Optional for ITL01/02

Locking plate



Manual Lever

Inserted inside the housing
to prevent the risk of damage

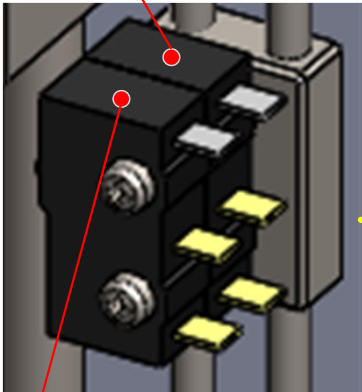


ITL ELECTRIC LINEAR ACTUATOR

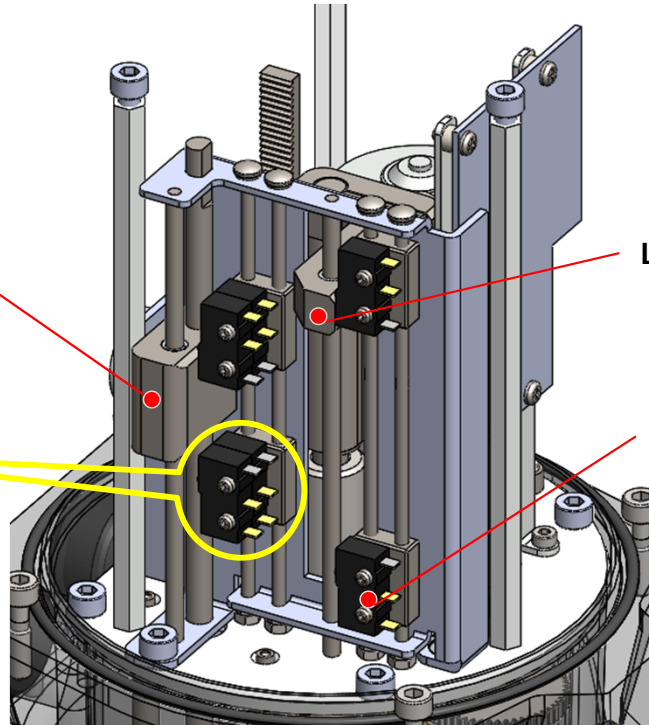
LIMIT & FORCE SWITCHES

Force Cam

Force Switch



Aux Force Switch (Option)



Limit Cam

Limit Switch

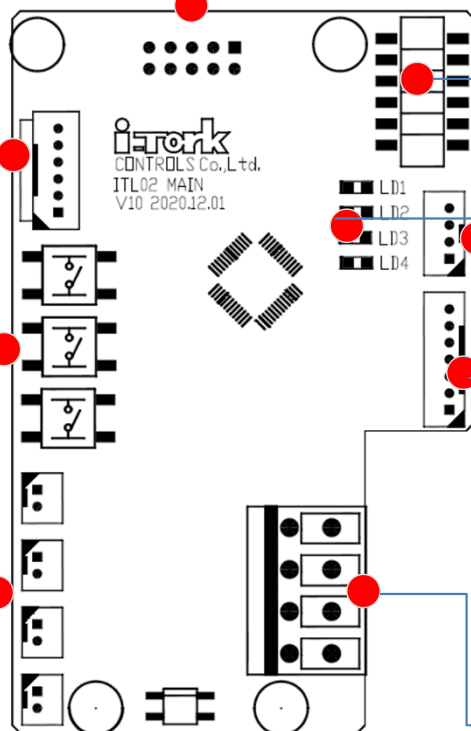
CONTROL BOARD

Power & External Wiring connector

Motor Connector
with High torque & fast responsiveness

TACTILE BUTTON SWITCH
for AUTO SCAN and easy manual operation.

LIMIT SWITCH / FORCE SWITCH
for easy & simple setting



DIP SWITCH
for setting
- CW/CCW
- INCHING/HOLDING
- INPUT signal (4~20mA / 0~10V / 0~5V / 1~5V / 2~10V)

LED
Local lamp indication (4 LEDs)

PK connector
for Potentiometer Kit Sensor to control position

DISPLAY / LP connector
for Position(%) display & Local Switch Cable

INPUT / OUTPUT CONTROL SIGNAL
Safety through ISOLATION of main power & input signal cables

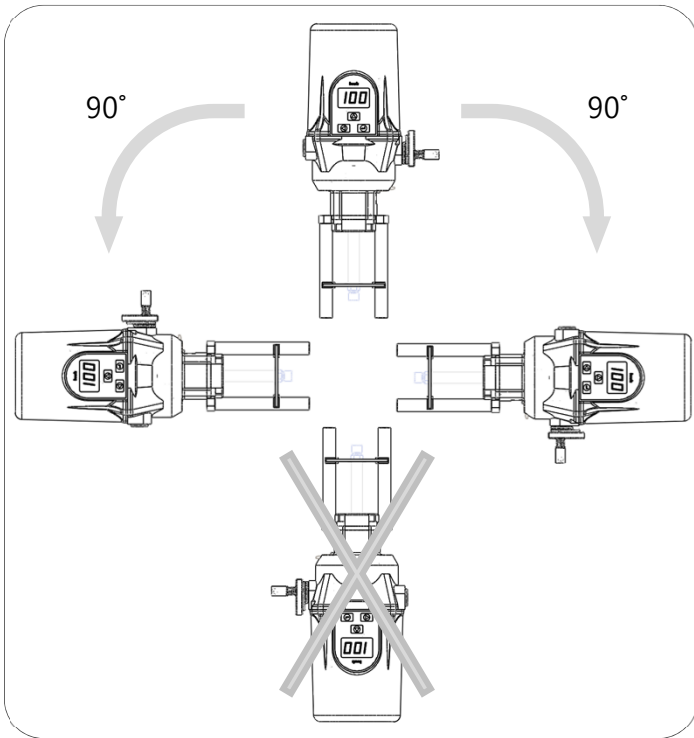
ITL ELECTRIC LINEAR ACTUATOR

Technical Data

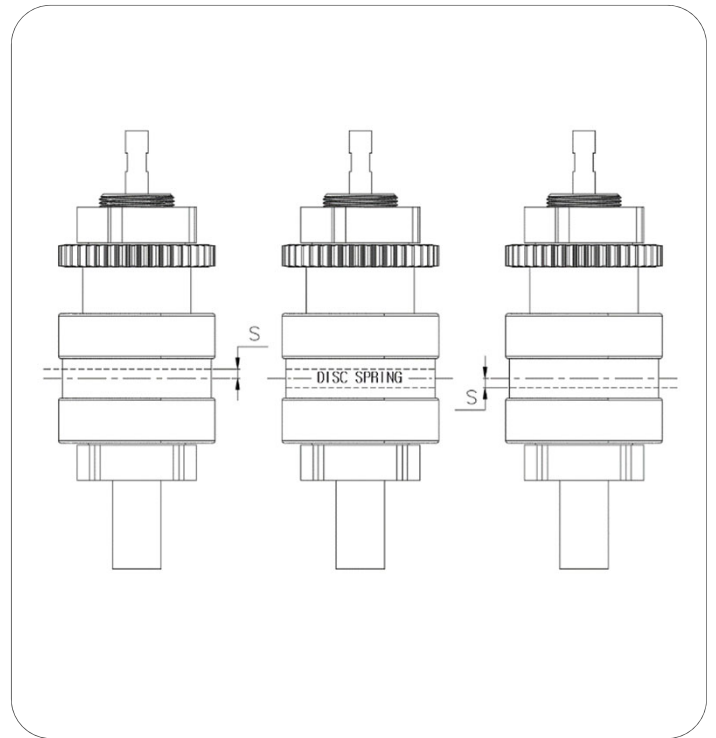
	ITL01	ITL02	ITL04	ITL06	REMARK
STROKE (mm)	15~25		40~50		Min~Max
THRUST FORCE (KN)	1	2	4	6	
ACTUATOR SPEED (mm/sec)	1.2 mm/sec variable between 70% to 130% without force loss				
MAIN POWER SUPPLY	AC 100V ~ 240V (Universal) 50/60Hz DC 24V / AC 24V				
RATED CURRENT (A)	0.5 ~ 1.0		1.5 ~ 1.9		Min~Max
DUTY CYCLE (ON/OFF)	Continuous Duty				
DUTY CYCLE (MODULATING)	Higher than 1200 start / hour				
OPERATING SPEED (sec)	16.7 ~ 25.0		33.3 ~ 41.7		Min~Max
CONTROL SIGNAL	4~20mA (Option : 0~10VDC, 0~5VDC, 1~5VDC, 2~10VDC)				Input / Output
SPACE HEATER	2W				
DISPLAY (Option)	GRAPHIC LCD (OPTION)				
LIMIT SWITCH	2 EA OPEN/CLOSE (SPDT 3A 250VAC)				
FORCE SWITCH	2 EA OPEN/CLOSE (SPDT 3A 250VAC)				
AUX. FORCE SWITCH (Option)	2 EA OPEN/CLOSE (SPDT 3A 250VAC)				
AMBIENT TEMPERATURE	-20°C~+70°C				
HOUSING PROTECTION GRADE	IP66 & 67				
CABLE ENTRY	2-PF1/2 TAP (OPTION : M20x1.5, NPT1/2, G1/2)				
WEIGHT(kgf)	4.5		6.0		

ITL ELECTRIC LINEAR ACTUATOR

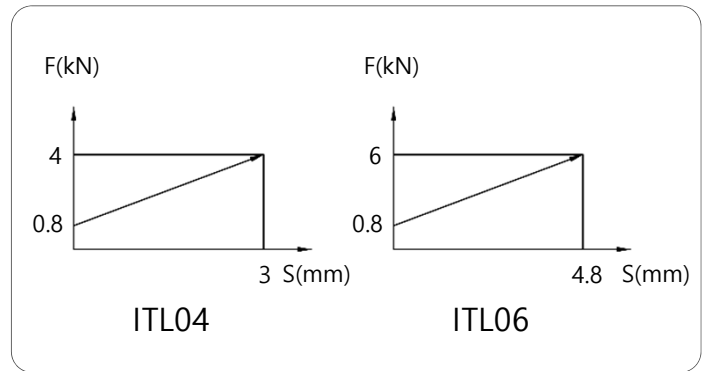
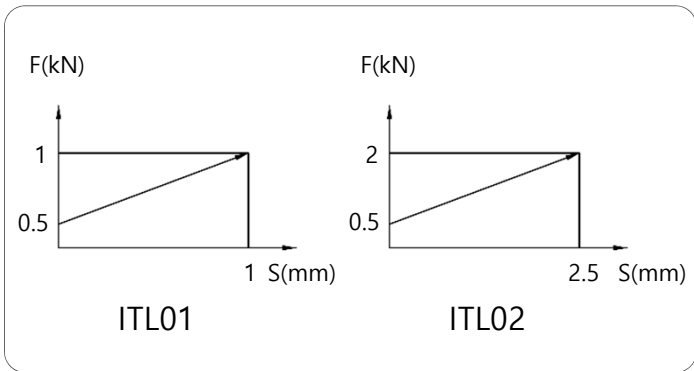
Correct mounting direction



Disc spring arrangement



Setting closing(opening) force



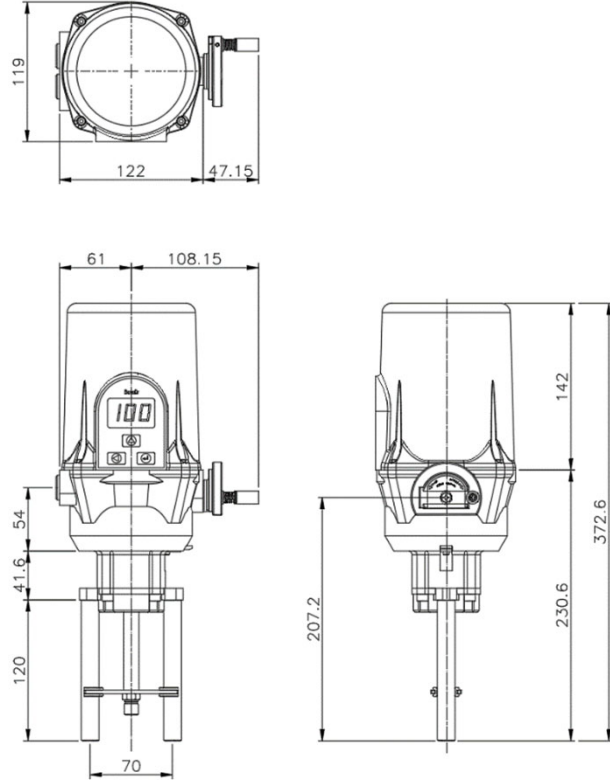
Options available

- * Digital Display Controller (Display for ON/OFF or RPC type)
- * RPC (Remote Position Controller for input & output)
- * Local Control with Remote Controller (IR)
- * Aux Force Switch

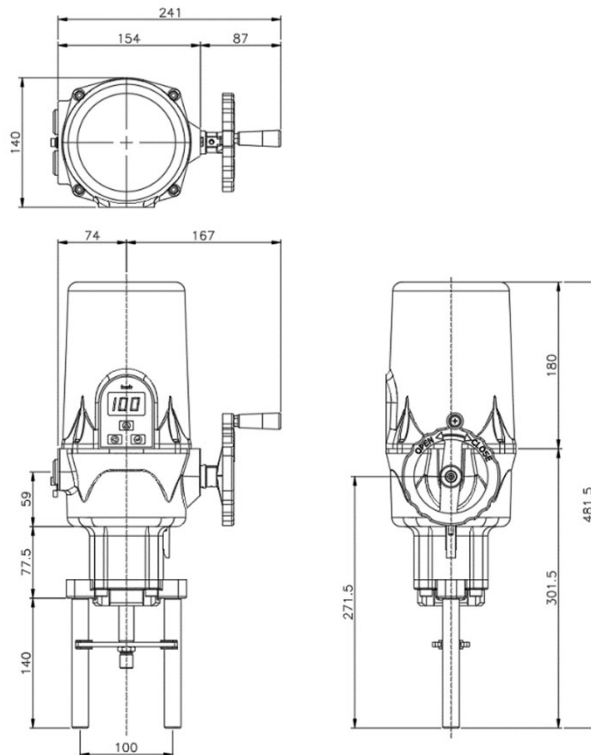
ITL ELECTRIC LINEAR ACTUATOR

Dimensions(mm)

ITL01/02 with Digital Display Controller



ITL04/06 with Digital Display Controller



ITL ELECTRIC LINEAR ACTUATOR

Comparison Table for ITL & IQL specification

	i-Tork					
	ITL01/02	ITL04/06	IQL04	IQL06	IQL08	IQL10
STROKE (mm)	15~25	40~50	40	40	50	50
THRUST FORCE (KN)	1.0 / 2.0	4.0 / 6.0	4.0	6.0	8.0	10
SPEED (mm/sec)	1.20		0.83	0.90	0.80	0.80
MAIN POWER SUPPLY	AC100V~240V (Universal) DC24V / AC24V		AC110V / 220V / 380V / 440 DC24V / AC24V			
RATED CURRENT(A) (for 220VAC)	0.5~1.0	1.5~1.9	0.26	0.29	0.48	0.50
DUTY CYCLE for On/Off	Continuous duty		S2 : 30 Min		S2 : 30 Min	
DUTY CYCLE for Modulating	Higher than 1200 start / H		S4 : 50%		S4 : 50%	
CONTROL SIGNAL Input / Output	4~20mA (option : 2~10, 1~5, 0~5VDC)		4~20mA (option : 0~10, 2~10, 1~5, 0~5VDC)		4~20mA (option : 0~10, 2~10, 1~5, 0~5VDC)	
LIMIT SWITCH	2ea (open:1/close:1)		2ea (open:1/close:1)		4ea (open:2/close:2)	
FORCE SWITCH	2ea (open:1/close:1)		NONE		2ea (open:1/close:1)	
AUX. FORCE SWITCH (Option)	2ea (open:1/close:1)		NONE		NONE	
AMBIENT TEMP	-20~+70°C		-20~+70°C		-20~+70°C	
MATERIALS	Aluminum Die Casting		Aluminum Die Casting		Aluminum Die Casting	
ENCLOSURE	IP66 & IP67		IP66		IP66	
CABLE ENTRIES	2-PF1/2 OPTION : M20x1.5 , NPT1/2 , G1/2		2-PF3/4 OPTION : M25x1.5, M20x1.5 NPT3/4 , G3/4		2-PF3/4 OPTION : M25x1.5 , M20x1.5 NPT 3/4, G3/4	
WEIGHT(kgf)	4.5	6.0	7.0	8.0	15.0	16.0
MOUNTING DIRECTION	90°		90°		90°	
APPLICABLE VALVE	2WAY, 3WAY		2WAY, 3WAY		2WAY, 3WAY	
* SIZE	Φ122xH373	Φ148xH482	Φ172xH501		Φ229xH555	

* SIZE : except Handwheel

RANGE OF PRODUCTS



Small Size Electric Quarter-turn Actuator E-ITQ Series



Electric Quarter-turn Actuator ITQ Series



Electric Linear Actuator IQL Series



Multi-turn Actuator ITM Series



**Pneumatic Actuator PDS Series
Position Monitoring Switches
ITS Series**



Heavy-Duty Pneumatic Actuator IS & IC Series

The details of this catalog are subject to change without prior notification.

i-tork[®] CONTROLS Co., Ltd.

Website : <http://www.i-tork.com>